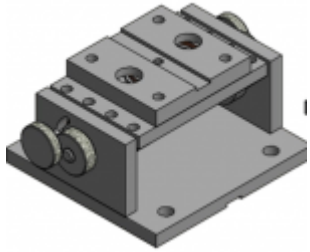


Post date:

Thursday, April 14, 2016 - 23:28

Last modified:

Tuesday, July 9, 2019 - 22:07



Sorry, i did not document this project too well.

I was just asked for the [drawings](#), so i just created this page to they can be posted.

Note, the overall height of this base was designed for a tailstock which i had laying around.

Ive used this base a number of times and found it has **one major flaw**, the locking so it does not pivot while machining. What i did **to fix this** was add two adjustable supports on the front and back between the bottom and top plates, the supports are nothing more then a peice of hex stock drilled and tapped along with a hex bolt threaded into them so they are adjustable.



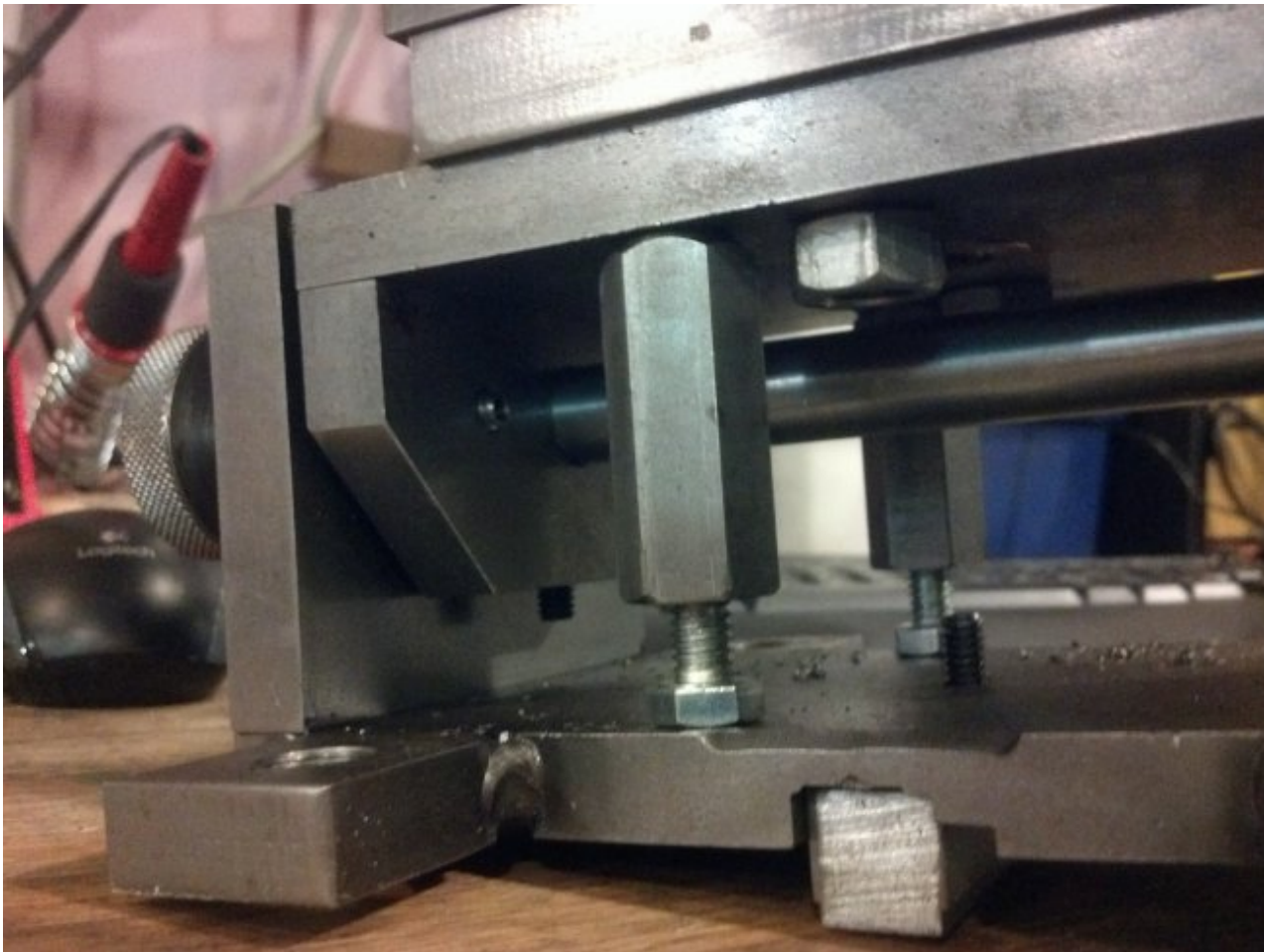
Here is the first loose assembly of a swivel and pivoting base for a 5C Collet Spin Indexer. This project is about 95% complete. As of now the only finishing touches will be milling some flats on the axle and a couple washers. Will probably re-make the T-bolts for the top swivel, they are alittle short right now.

Even though this was a single project, i have a background in manufacturing so at times when im machine things at home i have a "production" way of looking at things. Heres how i set up the rotory table to mill the radious slots in the side plates.

Short clip of how i milled the 45\* on the side blocks:

Image Gallery:

- [View the full image](#)



Mobile QR Barcodes:

## Save Article as PDF



## Current URL Address



Mobile: File Download for - [1\\_Spindex\\_Swivel.Pivot\\_Base.pdf](#)



**<br />Other site pages which link here:<hr />**

Category:

[Tooling](#)

Tags:

[Drawings](#)

[Videos](#)

-  [Save page as PDF](#)

File Downloads:

 [1\\_Spindex\\_Swivel.Pivot\\_Base.pdf](#)